

Advantages of Redi-Rail

CASE HARDENED from “38/42” to “58/60” Rockwell “C” depending upon application.

CASE DEPTH from .060” to .125” per your detail drawing or hand drawn sketch.

STRAIGHTENED after thermal treatment to .035” per 10 feet (some restrictions do apply).

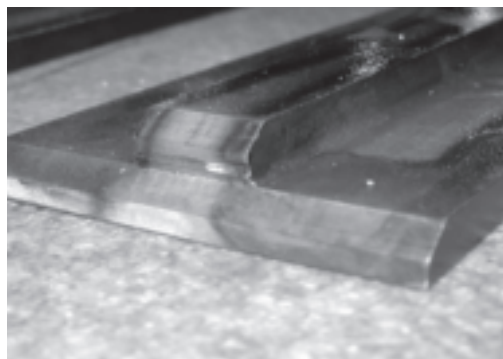
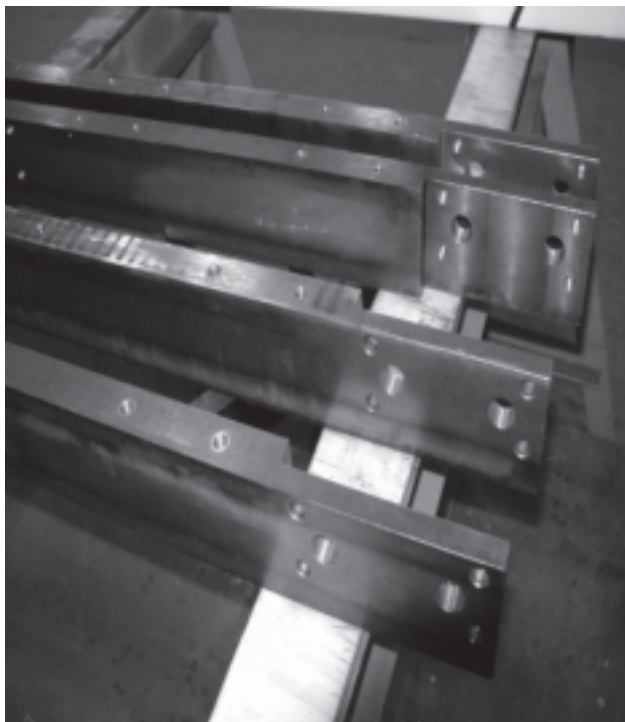
CUSTOM FLATTENING to your specifications; typically material is flattened within .020” over length required.

Redi-Rail is produced from our Sheffield Cold Drawn bars that are custom heat treated and machined to your exact hardness requirements and precision tolerances.

Designed for high wear applications, **Redi-Rail** is suited to handle applications found in various industries including automotive, food processing and handling, and large manufacturing.

Consideration for **Redi-Rail** should be given as an upgrade where 1060, 1045 or 4140, or 6150, materials are used for “precision” wear applications. It is designed to outlast commercial rail stock, extend service life, and reduce down time.

For a complete list of sizes available, please review the Sheffield Cold Drawn on preceding page.



Specified
by GM, Ford,
DaimlerChrysler, Toyota, and Honda

Stock Lengths

10 / 12 Ft Random Lengths
20 / 24 Ft Random Lengths
Custom Cut Lengths

Typical Applications

Automation Rails	Tool Shanks	Ways
“NC” Blocks	O.E.M. Parts	Guides



Available Sizes In-Stock

Square Cornered Stock FH

1/2" x 2-1/2" x 20/24 Ft R/L

1/2" x 3" x 20/24 Ft R/L

Round Edge "Domed" Stock FH

1/2" x 3" x 20/24 Ft R/L

(with 1/4" full radius)

Round Cornered Stock FH

5/8" x 3" x 20/24 Ft R/L

(with 3/16" radius corners)

Round Edge "Domed" Q & T Hot Rolled Stock

1/2" x 2-1/2" x 20/24 Ft R/L

(with 1/4" full radius)

For "BEEF RAIL" applications in the meat packing industry, demand **Redi-Rail**.

Material is boxed for shipping and handling purposes.
Separate charges may apply.

Benefits of Redi-Rail

North American Steel Company has over 35 years of experience manufacturing custom rails for its customers. Today, the **Redi-Rail** product has become the standard in various industries including automotive, food processing, meat packing houses, and bulk material handling.

We offer a variety of custom hardened rails, for those industries, ready for immediate shipment and release.

Square Cornered Stock FH Typical "U" Pattern

Round Edge "Domed" Stock FH Typical "U" Pattern

Round Cornered Stock FH Typical "U" Pattern

Round Edge "Domed" Q & T Hot Rolled Stock (28/32 Rockwell "C")

Please contact our office to discuss your specific requirements with our technical sales staff. Various configurations and wear patterns may be furnished.

Where through hardness and brute toughness are more critical than precision, consider Sheffield Wear Bars and Strips.

Sheffield Wear Bars and Strips are produced from our 400 BHN and 500 BHN abrasion resistant wear plate.

This information can be found on pages 52 and 53 of this technical data book.

Value-Added Services

We offer complete machining services; including, drilling, tapping, facing-to-length, counter-sinking, flame hardening, counter-boring, chamfering, and planing.

Past Protected Trade Name Of Pyramid Steel Company – Ultra Rail™