

SHEFFIELD™ WEAR BARS High Strength, Abrasion Resistant

Sheffield Wear Bars have a typical hardness of 400 BHN. Do not confuse these products with commercial grade A36 or carbon steel type products that are commonly sold as wear bars.

Sheffield Wear Bars are high quality, through hardened, alloy steel products. They have been manufactured for high abrasion, impact and vibration service applications.

The wear resistant properties extend throughout the product. Uniform hardness means predictability of service and fabrication.

OPTIONS FOR EVERY APPLICATION

Can't find abrasion resistant channel and angle? Tac-weld our wear bars and strips to the inner or outer surfaces for chain guides and wear strips.

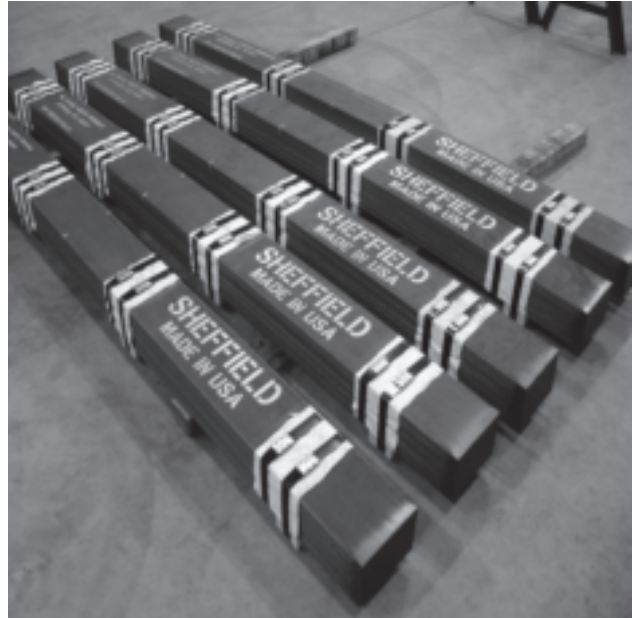
We inventory all sizes shown above for immediate shipment. Our unique light gage narrow strips provide unlimited options. We have thin narrow sizes that will drop into even the smallest channel to turn it into an abrasion resistant structural shape.

Problems with wear in the work area of a heavy hook, but don't want the headaches involved in making a new one. Bend our thin wear strip and tack it in place. You now have a 400BHN replaceable work surface.

Are you having problems with the entry edge of a bin or assembly wearing away? Tac a light gage strip around the exposed edge to provide an instant replaceable wear edge.

Thin steel teeth and cutting edges made from mild-steel causing problems due to bending or premature wear? Replace them with our 400BHN light gage strip. Extend service life by upgrading to parts with three to four times the hardness of the OEM part.

Sheffield Hot Rolled Wear Bars are square edged, true to shape and size. They weld easily, or, we can supply them pre-drilled and countersunk for fastening into place.



Available Sizes SHEARED or PLASMA CUT

1/8"	3/16"	1/4"	3/8"	Thickness
-	3/4"	-	-	↑ Widths ↓
1"	1"	1"	1"	
-	1-1/4"	1-1/4"	-	
1-1/2"	1-1/2"	1-1/2"	1-1/2"	
-	2-1/4"	-	-	
2-3/4"	2-3/4"	-	-	
-	3-1/2"	3-1/2"	-	

*1/8" is a modified analysis

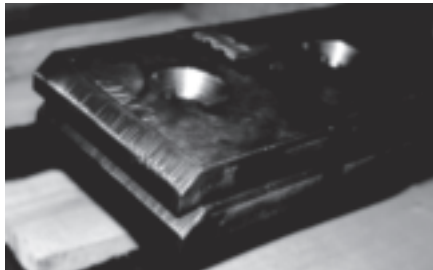
Available Sizes HOT ROLLED* WEAR BARS

1/4"	3/8"	1/2"	Thickness
-	-	1"	↑ Widths ↓
2"	2"	2"	
2-1/2"	2-1/2"	2-1/2"	
3"	3"	3"	
4"	4"	4"	

*Modified Analysis

CALL FOR CUSTOM SIZES TO MEET YOUR SPECIFICATIONS.

SHEFFIELD™ WEAR BARS High Strength, Abrasion Resistant



Typical Applications

Bumper Rails	Tracks
Wear Rails	Edge Protectors
Chain Guides	Cuttings Edges
Skids	Deflectors

Unlimited usage possibilities in almost every industry!

Stock Lengths

Sheared or Plasma Cut	10/12 Ft R/L
Hot Rolled Wear Bar	10/12 Ft and 20/24 Ft R/L

Typical Tolerance

Sheared or Plasma Cut	+/- 1/16" ON WIDTH
Oxy Burned	+/- 1/8" ON WIDTH

WEAR BAR FABRICATION DATA

Weld (Detailed Pocket Reference Cards available)
Readily weldable with 7018, or 8018 rods. Follow guidelines of The Standard Low Hydrogen Process. Use 309 Stainless Rods as an alternate if even simple pre, and post heating, is not possible. See safety precautions in this brochure under the plate section.

Machining

Sheffield wear bars (Hot Rolled, Sheared or burned), are all readily machined utilizing standard machining practice for hardened alloy steel products. The hardness, as furnished, is approximately 44RC. The hardness of our wear plate will be throughout, and uniform, so you should not encounter the hard and soft spots found in commercial grade AR wear bars.

Milling

Use of carburized cobalt alloyed high speed tools has been very successful. (M35). Improved efficiencies may be obtained by utilizing ISO P25 tooling for grooving, or K10 and K20 tooling.

Use C-5 or 6 Carbide tools 50 to 100SFPM
.001/.003 Chip Load Flood with coolant

Drilling: See drilling sheet. Cobalt alloyed high speed tools (example: over-carburized M42). Utilize tools with a tapered shank and long helical – short bit. Flood with lubricant – 20% diluted soluble oil. Where multiple holes are required, consider tungsten carbide tipped tooling, or solid carbide tools. (K-10 or K-20). Utilize protective headgear and exercise all caution appropriate for cold work on hardened alloy steels.

Value-Added Services

When you cannot shutdown, we can help. We offer the following: Custom HI-DEF PLASMA To Your CAD/CAM, Heavy Plate Cut-To-Size Sections (to 3" thick), Drilled And Countersunk Bars For Bolt-In, Ground Surfaces, Formed Wear Rails, Formed Rings, Machining, and Drilling.