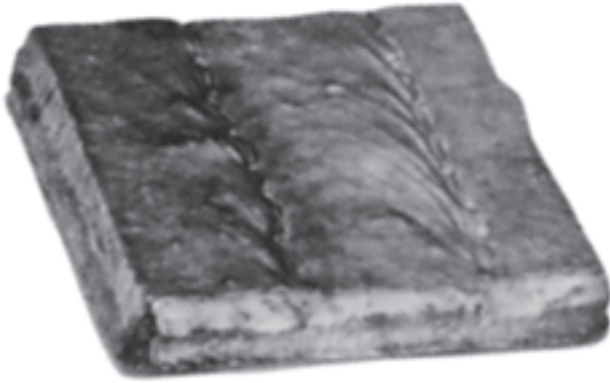


# REDI-CLAD™ Chromium Carbide Overlay



## Typical Applications

Scrapers	Coke Bin Liners
Chutes Liners	Dozer Blades
Hoppers	Ash Blades
Liners	Hammers
Asphalt Liners	

**Redi-Clad** is a fusion bonded overlay of chromium carbides deposited on a high strength carbon plate. This unique process creates a true metallurgical bond. As deposited, the overlay has a developed hardness of Rockwell "C" 60/62 and offers an unmatched abrasive resistance for various heavy industrial applications.

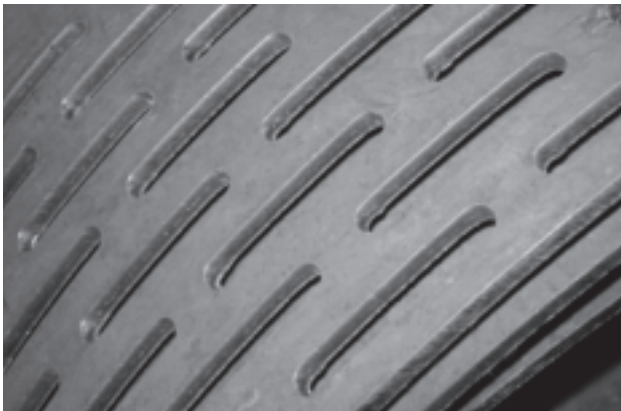
**Redi-Clad** cannot separate from its high strength base plate because the surface of the base plate is actually melted and combines with the overlay.

## Advantages of Redi-Clad

- Up to 10X the life vs. heat treated plate in high abrasive applications
- About 20X the life of carbon steel plate in high abrasive applications
- Can be welded with low hydrogen welding rod.

**Past Protected Trade Name Of Pyramid Steel Company – Wearchrome™ Overlay**

# SHEFFIELD™ SCREENS & DECKS & GRATES



Elevated strength levels – Abrasion Resistant – Extended Service Life. Specify **Sheffield** brand screens, decks and perforated plates where commercial steel products fail due to abrasive material flow.

North American Steel makes all of their custom fabrications with special property wear resistant alloys that will extend service life.



Straight rows parallel to length of sheet.



Straight rows parallel to width of sheet.



End staggered long way parallel to length of sheet.



Square slots straight center.



Rectangular slot long way parallel to width of sheet.